

LAB 4: CARDIOVASCULAR SYSTEM: BLOOD VESSELS

ACTIVITY 9: BLOOD VESSELS

INDICATE LEFT/RIGHT WHERE APPLICABLE AND ARTERY/VEIN WHERE APPLICABLE ON QUIZ/EXAM

Identify these vessels on the models in lab.

Arteries from heart

1. Pulmonary trunk
 - a. Pulmonary artery
2. Aorta
 - a. Ascending aortic
 - b. Aortic arch
 - c. Descending aorta
 - d. Abdominal aorta

Branches of aortic arch

3. Brachiocephalic artery
 - a. Right common carotid artery
 - b. Right subclavian artery
4. Left common carotid artery
5. Left subclavian artery

Branch of subclavian blood vessels

6. Axillary artery
7. Axillary vein
8. Brachial artery
9. Brachial vein
10. Radial artery
11. Ulnar artery

Veins into heart

12. Superior vena cava
13. ~~Inferior vena cava~~ (Use 19 for IVC)
14. Pulmonary vein

Veins into superior vena cava

15. Brachiocephalic vein

Veins into brachiocephalic vein

16. Internal jugular vein
17. External jugular vein
18. Subclavian vein

LAB 4: CARDIOVASCULAR SYSTEM

ACTIVITY 9: BLOOD VESSELS

INDICATE LEFT/RIGHT WHERE APPLICABLE AND ARTERY/VEIN WHERE APPLICABLE ON QUIZ/EXAM

Identify these vessels on the models in lab.

Abdominal blood vessels

19. Inferior vena cava
20. Celiac artery
21. ~~Hepatic portal vein~~ (discussed in Lab 7)
22. Hepatic artery
23. Hepatic vein
24. Superior mesenteric artery
25. Superior mesenteric vein
26. Renal artery
27. Renal vein
28. Suprarenal artery/vein
29. Inferior mesenteric artery
30. Middle sacral artery
31. Common iliac artery
32. Common iliac vein
33. External iliac artery
34. External iliac vein
35. Internal iliac artery
36. Internal iliac vein

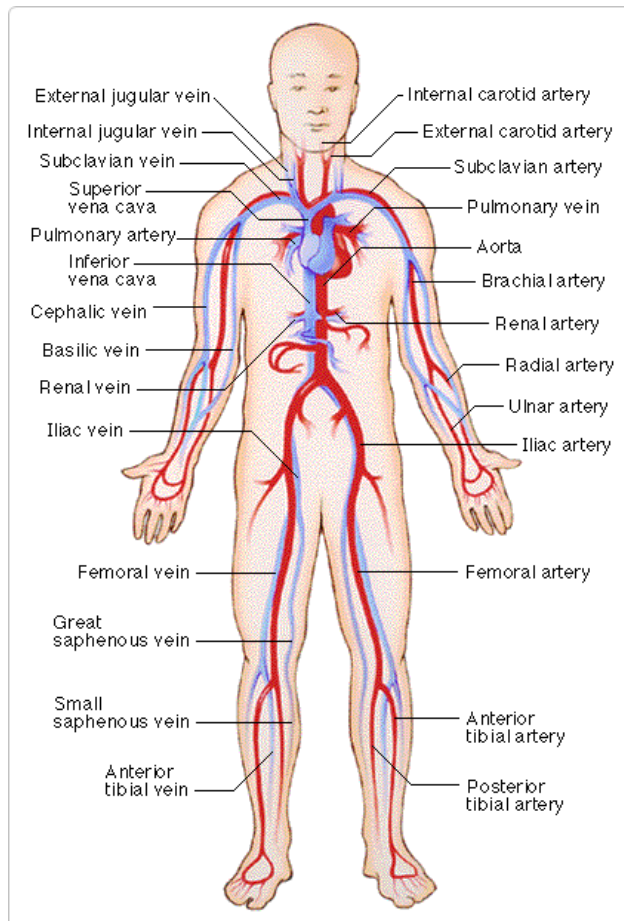
Leg blood vessels

37. Great saphenous vein (flat model only)**
38. Femoral artery
39. Femoral vein
40. Popliteal artery
41. Popliteal vein
42. Anterior tibial artery
43. Posterior tibial artery
44. Posterior tibial vein
45. Superior gluteal artery
46. Inferior gluteal artery

Special vessels (seen on fetal models)

47. Umbilical arteries (2)
48. Umbilical vein (1)

****Each leg has a great saphenous vein**



LAB 4: CARDIOVASCULAR SYSTEM: BLOOD VESSELS

ACTIVITY 9: BLOOD VESSELS

INDICATE LEFT/RIGHT WHERE APPLICABLE AND ARTERY/VEIN WHERE APPLICABLE ON QUIZ/EXAM

Identify these vessels on the models in lab.

Vessels of the head and neck

- 49. Common carotid artery
- 50. External carotid artery
- 51. Internal carotid artery
- 52. Vertebral artery
- 53. Basilar artery
- 54. Middle cerebral artery
- 55. Posterior cerebral artery
- 56. Temporal artery
- 57. Facial artery
- 58. Facial vein
- 59. Occipital artery
- 60. Maxillary artery
- 61. Anterior communicating artery
- 62. Anterior cerebral artery
- 63. Posterior communicating artery
- 64. External jugular vein
- 65. Internal jugular vein
- 66. Occipital vein

